

PRODUCT DATA SHEET – WSBP-4,8

Section 1. PRODUCT DESCRIPTION

SELF-DRILLING SCREW WITH EPDM WASHER FOR MAKING LAP JOINTS IN STEEL SHEETS – WSBP-4,8

Self-drilling screw WSBP-4,8 is made of heat-treated carbon steel in galvanized zinc coating 12 μm (WSBP) or SQ Ceramic coating (WSBP-D). Screw has SW hex head, pin threaded for use in steel, self-drilling tip and EPDM washer. Self-drilling screw heads can be painted according to RAL palette providing coating which is resistant to mechanical damages and UV radiation and ensures permanent colour adjusted to roof covering.

Use:

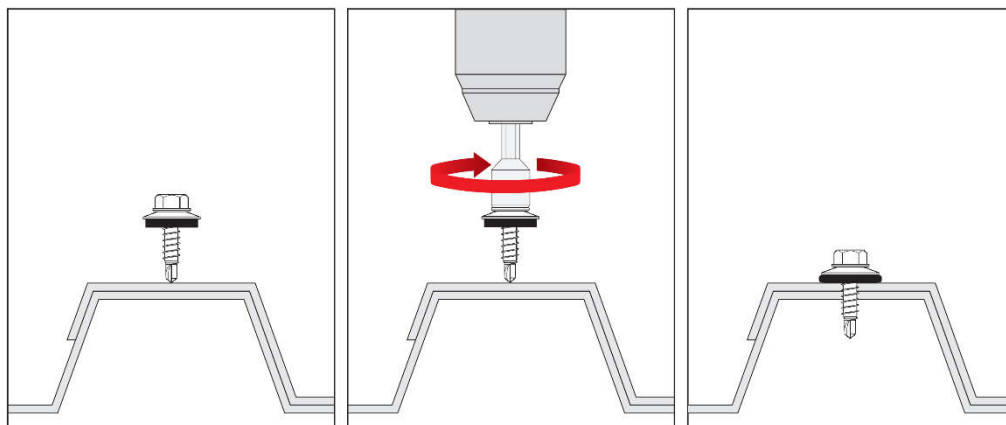
- making lap joints in steel sheets
- stitching sheets in construction
- flashings



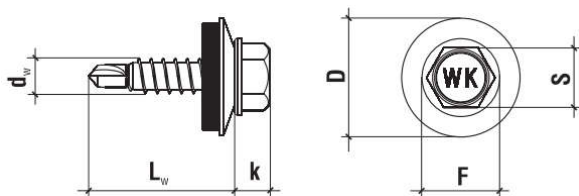
Self-drilling screws hold European Technical Assessment: ETA-16/0443

Section 2. METHOD OF INSTALLATION

1. Original self-drilling screws delivered by the manufacturer can be used only
2. Before installation identify the substrate, its thickness and environmental conditions (expressed as corrosivity categories), and then select screws which meet the above criteria
3. Correctly select screw type, its length, drilling capacity depending on sum of thickness values of members being fixed
4. Drilling capacity for each screw is given in corresponding Product Data Sheet and European Technical Assessment and stands for the sum of thickness values of members being fixed
5. Make sure to set optimum rotary speed when screwing, as too high rotary speed may cause burning of drilling bits and make it impossible to fasten the screw
6. At all times screws should be installed perpendicularly to the substrate surface
7. Make sure to press the washer correctly, as when the washer is pressed either too strongly or too weakly, lack of tightness is likely, which may result in corrosion in the fixing point



Section 3. TECHNICAL DATA



PRODUCT DATA SHEET – WSBP-4,8

TECHNICAL PARAMETERS		
Parameter	Unit	Value
Screw diameter	d _w [mm]	4,8
Drilling capacity	Σt _i [mm]	≤ 2,5
Wrench size	S [mm]	SW-8
Head height	k [mm]	4,5
Head diameter	F [mm]	10,0
Tip length	[mm]	5,0
Screw material	-	carbon steel
Corrosion protection	WSBP	galvanized zinc coating 12 µm
	WSBP-D	SQ Ceramic coating
EPDM washer D [mm]	WSBP	steel Z14
	WSBP-D	aluminium A14
Coating to RAL palette	-	min. 60 µm
Substrate material	-	steel ≥ S280GD
European Technical Assessment	-	ETA-16/0443

INSTALLATION PARAMETERS		
Parameter	Unit	Value
Screw diameter	d _w [mm]	4,8
Diameter of hole in the substrate	d ₀ [mm]	-
Min. depth of hole in the substrate	h ₀ [mm]	-
Anchorage depth	h _{eff} [mm]	push-through
Min. substrate thickness	h _{min} [mm]	0,5
Min. spacing	s _{min} [mm]	50
Min. distance from edge	c _{min} [mm]	25

RESISTANCE						
Characteristic pull-out / shear strength [kN]						
Substrate thickness [mm]	Steel sheet thickness [mm]					
	0,50	0,63	0,75	0,88	1,00	1,25
0,50	0,64/1,10	0,64/1,10	0,64/1,10	0,64/1,10	0,64/1,10	0,64/1,10
0,63	0,64/1,10	0,82/1,50	0,82/1,50	0,82/1,50	0,82/1,50	0,82/1,50
0,75	0,64/1,10	0,82/1,50	0,96/1,74	0,96/1,74	0,96/1,74	0,96/1,74
0,88	0,64/1,10	0,82/1,50	0,96/1,74	1,28/1,74	1,28/1,74	1,28/1,74
1,00	0,64/1,10	0,82/1,50	0,96/1,74	1,28/1,74	1,55/1,74	1,55/1,74
1,25	0,64/1,10	0,82/1,50	0,96/1,74	1,28/1,74	1,55/1,74	2,21/1,74

*Partial safety factor of 1.33 recommended

SELECTION TABLE						
WSBP (galvanized zinc coating ZN)	WSBP-RAL (galvanized zinc coating ZN + RAL)	WSBP-D* (SQ Ceramic coating)	WSBP-D-RAL* (SQ Ceramic coating + RAL)	Screw dimensions	Max. usable length	Number of pieces in a box
				d _w x L _w [mm]	t _{fix} [mm]	[pcs]
WSBP-48019-Z14	WSBP-48019-Z14-RAL	WSBP-D-48019-A14	WSBP-D-48019-A14-RAL	4,8 x 19	1,5	250
WSBP-48025-Z14	WSBP-48025-Z14-RAL	WSBP-D-48025-A14	WSBP-D-48025-A14-RAL	4,8 x 25	2,5	250

*Screw on request and to order

Section 4. REMARKS

- All previous versions of this Product Data Sheet shall cease to be valid
- Data given in this Product Data Sheet is in accordance with current knowledge and published in good faith. KLIMAS Sp. z o.o. is not responsible for correctness and quality of the fixing if recommendations regarding method of use and installation are not followed.