

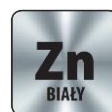
Section 1. PRODUCT DESCRIPTION

JOIST HANGER – WB

Three-dimensional plate fasteners for nailing are used for various timber-to-timber connections. For connections, the following fasteners can be used: nails, screws, ring shank nails and screws. Angle brackets have their own nailing diagrams. If no information is given it is assumed that they should be fixed using all available holes. Fasteners are coated with blue zinc-plated coating ensuring corrosion protection and come in fire resistance class A1.

Features and advantages of fasteners:

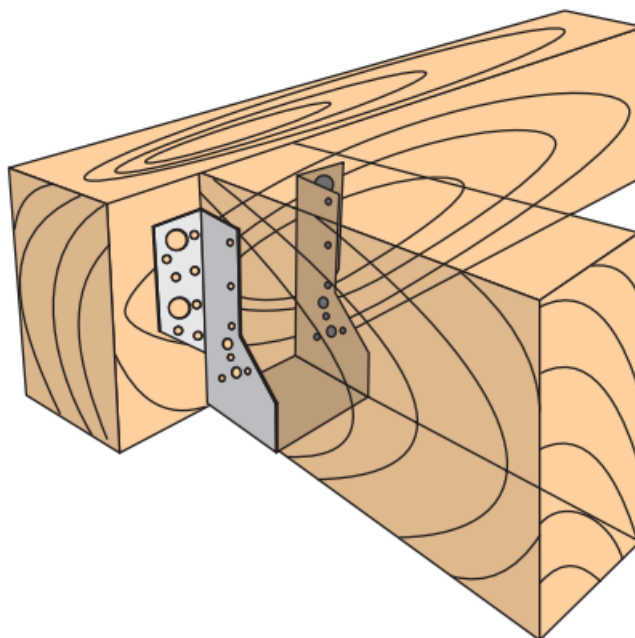
- easy installation
- savings in construction materials
- stability and rigidity of the structure
- high quality, durability and aesthetics
- corrosion protection
- fire resistance class – A1



Fasteners hold National Technical Assessment: ITB-KOT-2019/0439 Rev. 1

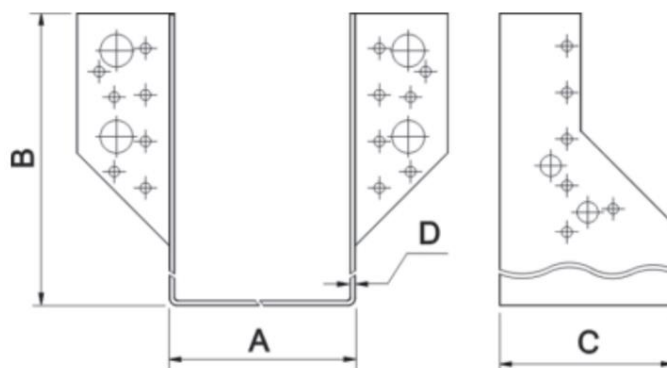
Section 2. METHOD OF INSTALLATION

1. Original fasteners delivered by the manufacturer can be used only
2. The fastened wooden elements should be defect-free (no knots, cracks, colourations, rots, structure and shape defects, mechanical damages) as any defects reduce their strength
3. For connection, suitable pin type fasteners should be selected with an adequate length depending on thickness of the elements to be fastened
4. Pin type fasteners should conform to PN-EN 14592+A1:2012
5. Screws and nails should be used directly in wooden substrate without prior drilling
6. Fasteners should be used in accordance with technical design prepared, taking into account Polish standards and building regulations



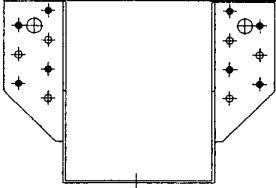
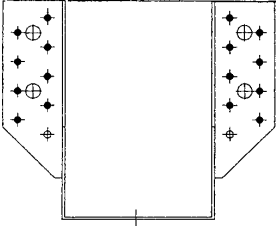
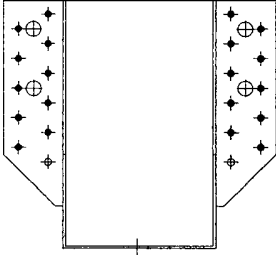
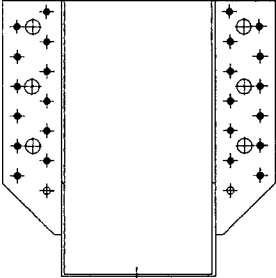
PRODUCT DATA SHEET – WB

Section 3. TECHNICAL DATA



SELECTION TABLE									
Product marking	Dimensions [mm]				No. of holes			Design resistance	Number of pieces in a box
	A	B	C	D	ø5	ø9	ø14	[kN]	pcs
WB-01(X20)	29	102	75	2	20	4	2	5,53	20
WB-02(X20)	42	132	75	2	24	2	4	5,53	20
WB-03(X20)	45	102	75	2	18	4	2	6,98	20
WB-04(X20)	45	137	75	2	30	4	4	6,98	20
WB-05(X20)	45	171	75	2	32	4	4	9,69	20
WB-06(X20)	50	102	75	2	18	4	2	6,98	20
WB-07(X20)	50	169	75	2	32	4	4	9,69	20
WB-08(X20)	51	102	75	2	18	4	2	6,98	20
WB-09(X20)	51	138	75	2	32	4	4	6,98	20
WB-10(X20)	54	126	75	2	24	2	4	6,98	20
WB-11(X20)	54	147	75	2	26	4	4	6,98	20
WB-12(X20)	64	102	75	2	18	2	2	5,53	20
WB-13(X20)	64	132	75	2	32	4	4	6,98	20
WB-14(X20)	64	152	75	2	32	4	4	6,98	20
WB-15(X20)	68	152	75	2	32	4	4	6,98	20
WB-16(X20)	68	160	75	2	32	4	4	8,75	20
WB-17(X20)	74	157	75	2	32	4	4	8,75	20
WB-18(X20)	75	127	75	2	30	4	4	5,53	20
WB-19(X20)	79	154	75	2	32	4	4	8,75	20
WB-20(X20)	80	212	80	2	34	2	4	9,69	20
WB-21(X20)	84	122	75	2	30	4	4	6,98	20
WB-22(X20)	90	148	75	2	32	4	4	8,75	20
WB-23(X20)	94	146	75	2	32	4	4	8,75	20
WB-24(X20)	104	142	75	2	32	4	4	8,75	20
WB-25(X10)	124	162	80	2	28	2	4	9,69	10
WB-26(X10)	144	182	80	2	34	2	4	9,69	10

PRODUCT DATA SHEET – WB

NAILING DIAGRAM			
WB-01, WB-02, WB-12, WB-18	WB-03, WB-04, WB-06, WB-08, WB-09, WB-10, WB-11, WB-13, WB-14, WB-15, WB-21	WB-16, WB-17, WB-19, WB-22, WB-23, WB-24	WB-05, WB-07, WB-20, WB-25, WB-26
			

Section 4. REMARKS

1. All previous versions of this Product Data Sheet shall cease to be valid
2. Data given in this Product Data Sheet is in accordance with current knowledge and published in good faith. KLIMAS Sp. z o.o. is not responsible for correctness and quality of the fixing if recommendations regarding method of use and installation are not followed.