

PRODUCT DATA SHEET – KPW

Section 1. PRODUCT DESCRIPTION

UNIVERSAL PLUG PLASTIC SLEEVE – KPW

Universal plug plastic sleeve KPW is made of polyamide. It is used for fixing of members on most of building substrates. It has anti-rotation lugs which keep the sleeve in place when screwing in the screw. The sleeve adjusts to substrate type: in solid materials, installation is executed by expansion of the sleeve, and in materials with voids or plasterboard by shape fixation.

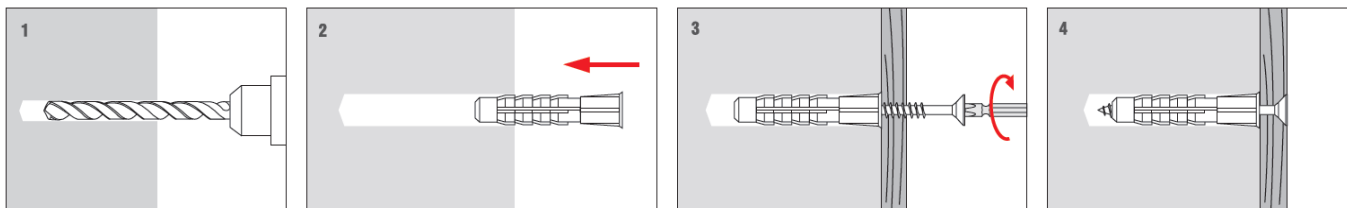


Types of substrates on which plastic sleeve KPW can be installed:

- Concrete
- Solid clay brick and sand-lime brick
- Hollow clay brick and sand-lime brick
- Plasterboard

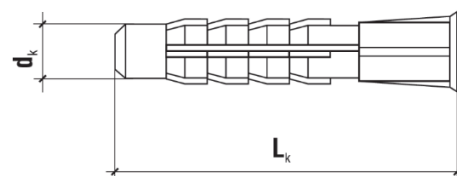
Section 2. METHOD OF INSTALLATION

1. Original sleeves delivered by the manufacturer can be used only
2. Before fastening identify the substrate on which sleeve will be installed
3. Select adequate length of the sleeve so that expansion zone is in the construction material of the wall
4. Use proper method of drilling according to a substrate type (holes in masonry substrate made of hollow blocks should be drilled using a drill without impact)
5. Diameter of drilled holes should match diameter of the sleeves used
6. Drilled holes in substrates of solid materials should be deeper by min. 10mm compared to the sleeve anchorage depth
7. Clean the holes in solid materials of drillings with a back and forth motion of the drill at a reduced speed
8. Then insert the sleeve into a drilled hole, and drive the matched screw through the element being fixed until it completely penetrates the sleeve (pre-fastening installation)
9. The sleeve is not a structural element



Section 3. TECHNICAL DATA

SELECTION TABLE					
Product code	Sleeve diameter and length	Recommended screw diameter	Min. anchorage depth	Min. depth of drilled hole	Number of pieces in a box
	$d_k \times L_k$ [mm]	d_w [mm]	h_{eff} [mm]	h_0 [mm]	[pcs]
KPW-06035N	6x35	3-4	35	45	500
KPW-06050N	6x50	3-4	50	60	500
KPW-08050N	8x50	4-5	50	60	300
KPW-10060N	10x60	5-6	60	70	200



Section 4. REMARKS

1. All previous versions of this Product Data Sheet shall cease to be valid
2. Data given in this Product Data Sheet is in accordance with current knowledge and published in good faith. KLIMAS Sp. z o.o. is not responsible for correctness and quality of the fixing if recommendations regarding method of use and installation are not followed.