

PRODUCT DATA SHEET – PR

Section 1. PRODUCT DESCRIPTION

FRAME PLUG WITH STRAIGHT HOOK – PR

Frame plug PR comprises sleeve made of polyamide and steel screw with straight hook with protective zinc coating. It is designed for fixing of installation elements and interior finish systems such as: curtain rods, furniture shelves, picture frames or furniture hanged on walls on all building substrates. The plug has a long anchorage zone which ensures reliable connection on both substrates with voids and solid substrates.



Types of substrates on which frame plug PR can be installed:

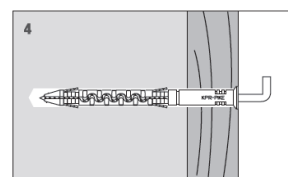
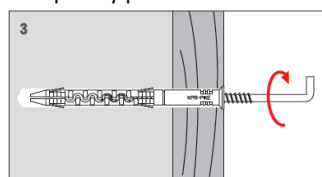
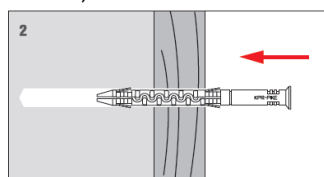
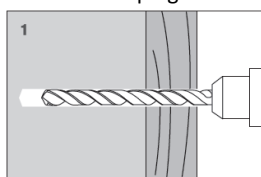
- Concrete
- Solid clay brick
- Hollow clay bricks
- Autoclaved aerated concrete



Frame plugs hold National Technical Assessment: ITB-KOT-2018/0528 Rev. I

Section 2. METHOD OF INSTALLATION

1. Original frame plugs delivered by the manufacturer can be used only
2. Before installation identify a substrate in which the plug will be installed and compare loads which the plug will carry to resistance values given in Product Data Sheet or National Technical Assessment
3. Select an adequate length of the plug so that expansion zone is in the construction material of the wall (thickness of member being fixed matches max. usable length of the plug – t_{fix})
4. Use proper method of drilling according to a substrate type (holes in brickwork substrate made of hollow or autoclaved aerated concrete blocks should be drilled using a drill without impact)
5. Diameter of drilled holes should match diameter of the plugs used
6. Drilled holes in substrates of solid materials should be deeper by min. 10mm compared to the plug anchorage depth
7. Clean the holes in solid materials of drillings with a back and forth motion of the drill at a reduced speed
8. Then insert the plug into a drilled hole, and drive the hook until it completely penetrates the sleeve



Section 3. TECHNICAL DATA

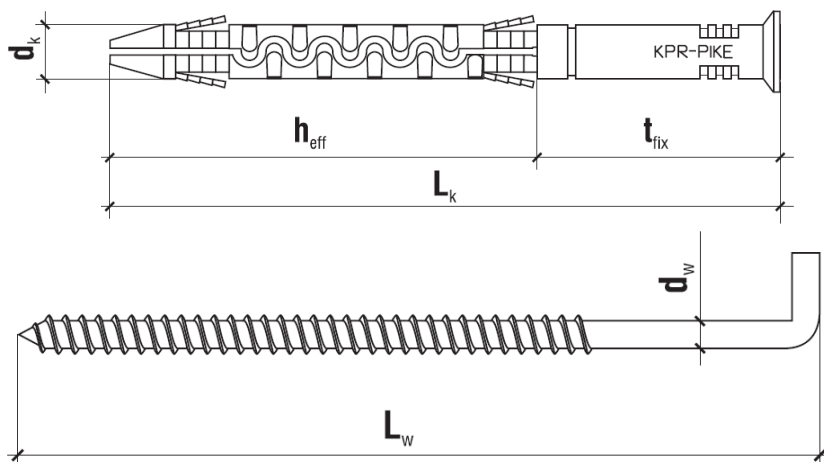
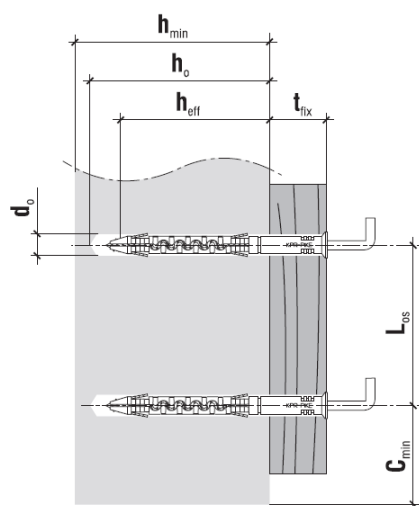
TECHNICAL PARAMETERS		
Parameter	Unit	Value
Plug diameter	d_k [mm]	8/10
Hole/drill diameter	d_o [mm]	8/10
Effective anchorage depth	h_{eff} [mm]	60/70
Drilled hole depth	h_o [mm]	70/80
Sleeve material	[-]	PA – polyamide
Screw material	[-]	Zinc-plated steel
National Technical Assessment	[-]	KOT-2018/0528

INSTALLATION PARAMETERS			
Plug type	Min. substrate thickness	Min. distance from edge	Min. axial distance
	h_{min} [mm]	c_{min} [mm]	L_{os} [mm]
PR-8	90	120	120/180*
PR-10	105	140	140/210*

*for concrete substrate/other substrates

RESISTANCE		
Substrate type	Design pull-out resistance [kN]	
	PR-8	PR-10
Concrete C20/25 ÷ C50/60	-	-
Solid clay brick	0,36	0,60
Hollow clay brick	0,36	0,48
Autoclaved aerated concrete	0,45	0,75

PRODUCT DATA SHEET – PR



SELECTION TABLE				
Product code	Sleeve diameter and length	Screw diameter and length	Max. usable length	Number of pieces in a box
	$d_k \times L_k$ [mm]	$d_w \times L_w$ [mm]	t_{fix} [mm]	[pcs]
PR-08080	8x80	6x105	20	50
PR-08100	8x100	6x125	40	50
PR-10100	10x100	7x125	30	50
PR-10135	10x140	7x165	70	50
PR-10160	10x160	7x185	90	50

Section 4. REMARKS

1. All previous versions of this Product Data Sheet shall cease to be valid
2. Data given in this Product Data Sheet is in accordance with current knowledge and published in good faith. KLIMAS Sp. z o.o. is not responsible for correctness and quality of the fixing if recommendations regarding method of use and installation are not followed.