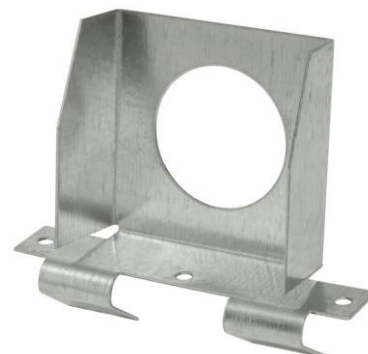


PRODUCT DATA SHEET – ZPP

Section 1. PRODUCT DESCRIPTION

ONE-SIDE TRANSVERSE CONNECTOR FOR CD60/27 SECTIONS – ZPP

One-side transverse connector ZPP is used for angle connections of CD 60/27 steel sections in single suspended ceiling grids. Connector is made of zinc plated sheet steel DX51D with hot-dip galvanized coating min. Z100. Connectors conform to the requirements of reaction to fire (EUROCLASS A1) and are made in accordance with durability A:B Class.



Connectors conform to European standard: PN-EN 13964

Section 2. TECHNICAL DATA

RESISTANCE / SELECTION TABLE			
Code and size	Steel thickness [mm]	Permissible load F_{dop} [kN]	Number of pieces in a box [pcs.]
ZPP-08	0,80	0,30	100

Section 3. REMARKS

1. All previous versions of this Product Data Sheet shall cease to be valid
2. Data given in this Product Data Sheet is in accordance with current knowledge and published in good faith. KLIMAS Sp. z o.o. is not responsible for correctness and quality of the fixing if recommendations regarding method of use and installation are not followed.